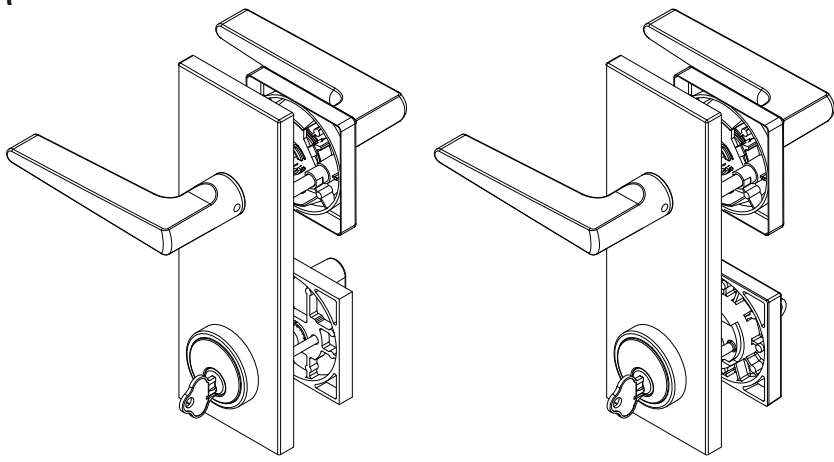


# Installation Template for Lever Set and Deadbolt

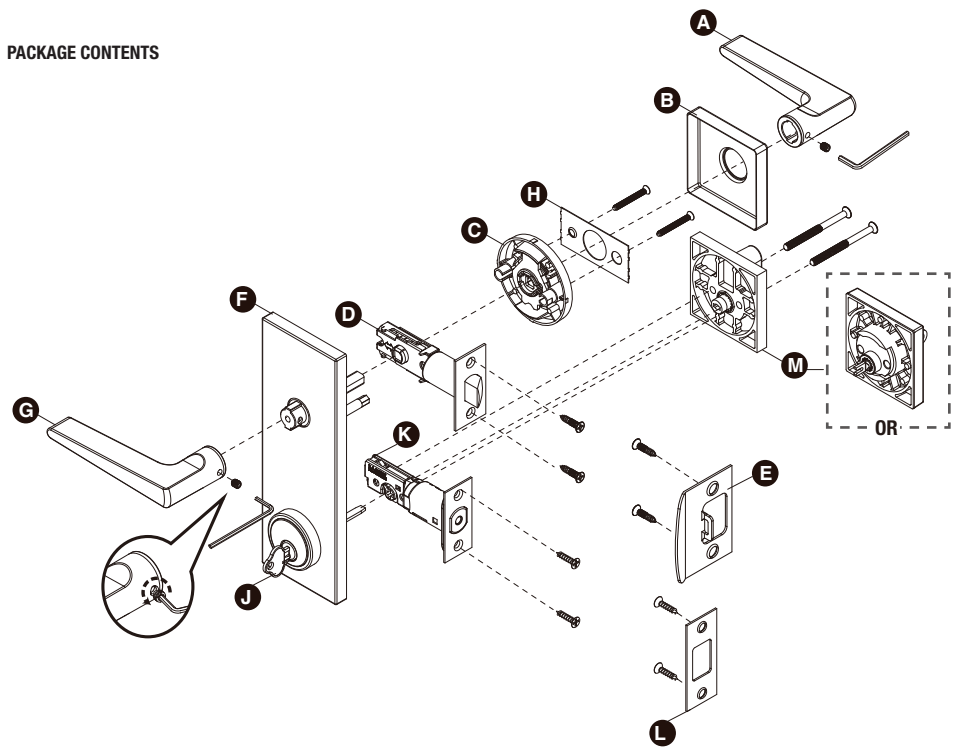
## Installation Instructions

### 1 FOR



**NOTE:** Carefully follow these instructions when installing. Screws to be tightened to a recommended 2.5Nm torque.

#### PACKAGE CONTENTS



### 2 Safety Information

Read the precautions and instructions in this manual before installing and using this lock. Save this manual for future reference.

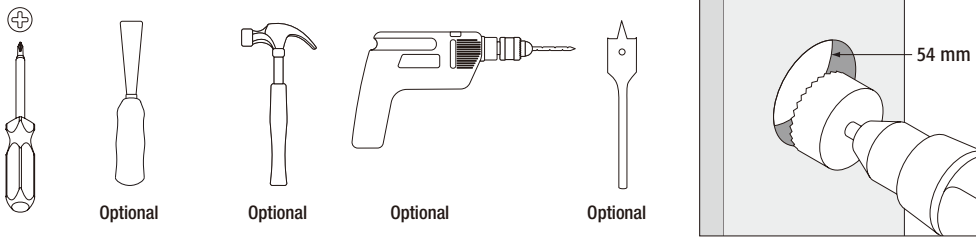
**WARNING:**  
If the door needs to be drilled, be familiar with how to use your drill safely, and understand all the door preparation steps before proceeding.

**CAUTION:**  
Before beginning the installation, please read and understand the entire manual.

**NOTE:**  
To ensure a long lasting finish, remove the locks, or do not install the locks, prior to painting your door. Periodically clean the locks with mild soap and a soft cloth. Do not use abrasives or harsh chemicals, and avoid sharp or scratching objects.

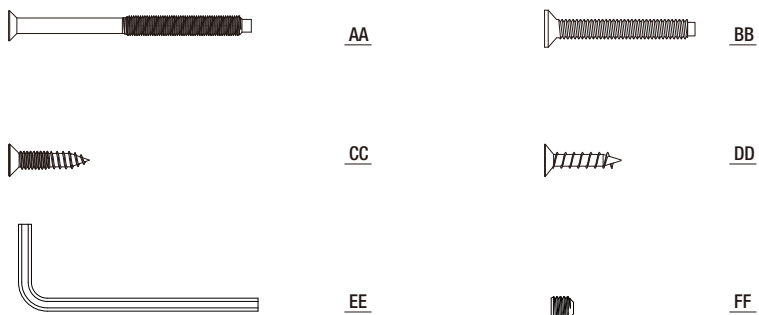
### 3 Pre-Installation – Tools Required/Hardware Included

#### TOOLS REQUIRED



Part	Description	Quantity
AA	Screws for Cylinder	2
BB	Mounting Screws for Lever	2
CC	Strike Plate Screws	4
DD	Latch Plate Screws	4
EE	Allen Wrench	1
FF	Grub Screw for Lever	2

**Note:** Not to scale.



Part	Description	Quantity
A	Interior Lever	1
B	Interior Rose	1
C	Interior Rose Plate	1
D	Latch	1
E	Strike Plate	1
F	Exterior Plate	1
G	Exterior Lever	1
H	Inside Square Plate	1
J	Key	2
K	Latch for Deadbolt	1
L	Strike Plate for Deadbolt	1
M	Interior Assembly	1

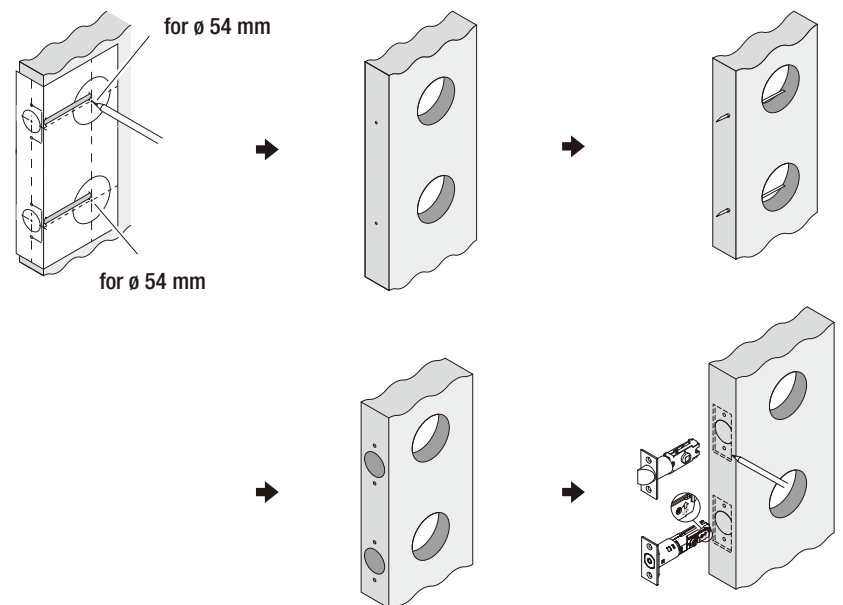
### 4 Pre-Installation (continued) – Door Preparation

**NOTE:** If your door already has holes, skip to Installation.

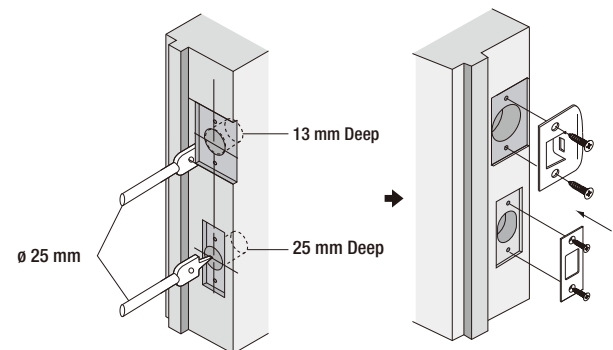
**1** Using the template, mark the door, drill the holes, and chisel out rebates to suit the latches.

**NOTE:** Drill from both sides to avoid wood splitting.

**NOTE:** The latch hole drilling must be done accurately to avoid misalignment.

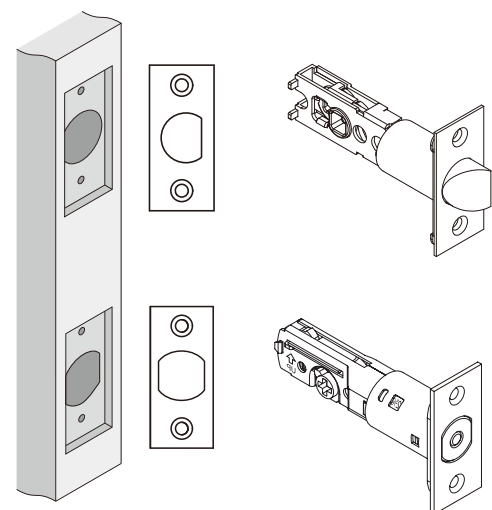


**2** Prepare the door jamb – using the strike plate as a pattern, drill the latch and screw holes, and chisel out rebates until the strike plates fit flush



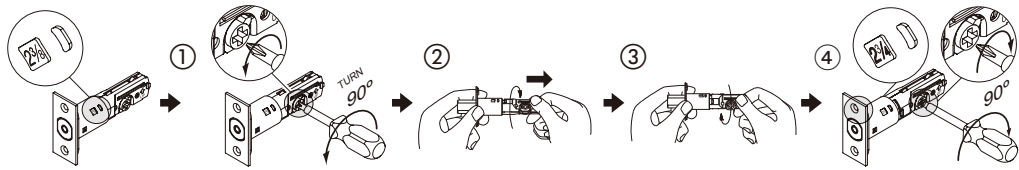
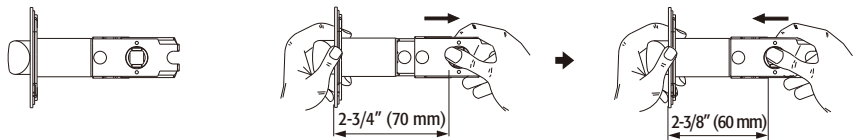
### 5 Installation

**1** Installing the latch



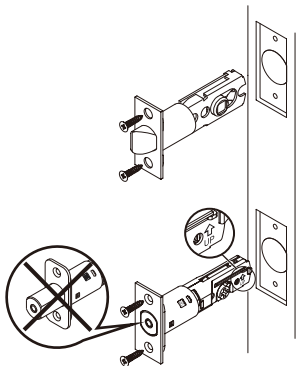
B. Set the latch backset

**CAUTION:** Be sure the latch cam is upright before making any backset adjustment.

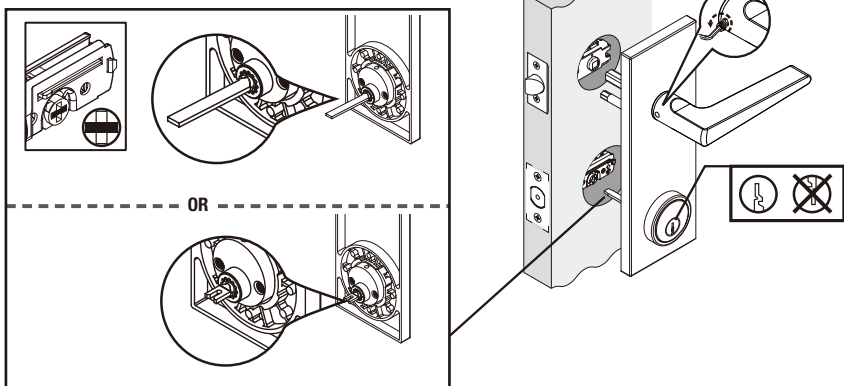


C. Install the latch

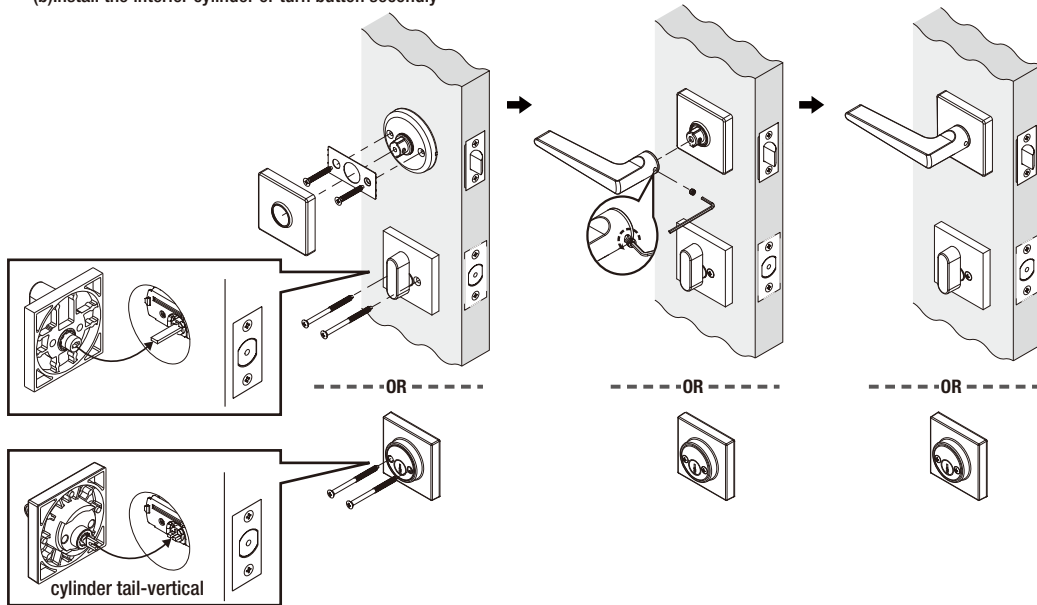
**NOTE:** The bevel should face the door jamb.



**2** Installing the exterior set  
-Insert the cylinder tail horizontally

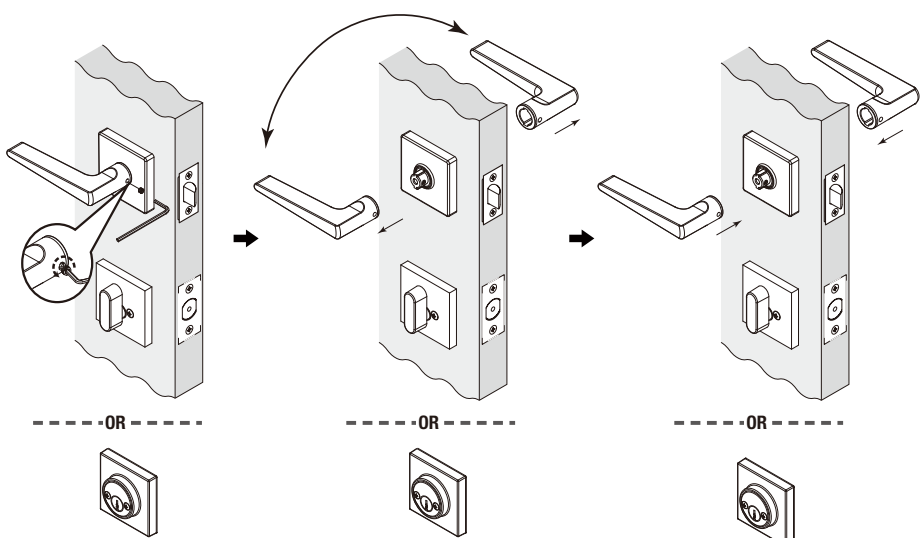
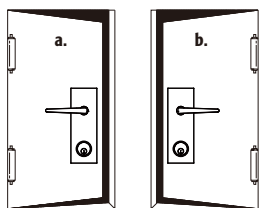


**3** Installing the interior set  
(a) Install the interior lever set to the exterior set firstly  
(b) Install the interior cylinder or turn button secondly



SWITCHING THE HANDLES (IF REQUIRED)

**NOTE:** Levers installed in reverse will not affect the product's performance.



Installation Template for  
Lever Set and Deadbolt

Lever Set Hole

Drill 54mm hole

45mm  
40mm  
35mm

FOLD HERE

DOOR THICKNESS  
Mark centre-line  
of latch hole  
Drill 25mm hole  
at centre of door

FOLD HERE

BACKSET 60mm

BACKSET 70mm

**NOTE:** To ensure smooth lock operation, please mark and drill the two latch holes at 101.6mm (4") pitch very accurately.

Deadbolt Hole

Drill 54mm hole

45mm  
40mm  
35mm

FOLD HERE

DOOR THICKNESS  
Mark centre-line  
of latch hole  
Drill 25mm hole  
at centre of door

FOLD HERE

BACKSET 60mm

BACKSET 70mm

Fit here on door edge

CENTER TO CENTER 4" (101.6 mm)

**TRADEPRO**  
BY GAINSBOROUGH

Gainsborough Hardware Industries Limited,  
Melbourne, Australia. A.B.N. 25 004 792 269  
www.gainsboroughhardware.com.au

Installation Template  
for Lever Set and Deadbolt

